

- Before using the devices, carefully read and keep the precautions for use described below. Always check that you are handling the devices correctly. Throughout this manual, the term "device" refers to the diffuser and its accessories.
- If you notice a burning smell or if the product shows other signs of serious malfunction, immediately unplug the power cord from the electrical outlet. Wait for the burning smell to dissipate, then contact your retailer.
- If the devices are dropped, unplug the power cord from the electrical outlet.
- Maintain the essential oil diffuser only with a suitable cleaner available from your retailer.
- Do not attempt to disassemble or modify the devices, as you will expose yourself to risk and will lose all rights to the 5 year parts and labour warranty.
- Avoid bending, twisting or pulling the power cord, as this may damage it and create a risk of fire or electric shock.
- Do not place heavy objects on the devices.
- Do not block the diffusion outlet of your device.

- Do not use the devices in places that are smoky, damp, dusty or subject to strong vibrations.
 - Do not expose the devices to high temperatures.
 - Do not diffuse for more than 10 minutes in a child's room in their presence.
 - Do not use the devices near an open flame.
 - Do not use the devices in a humid atmosphere.
- Do not immerse the devices in water.
- Follow the precautions for use provided with the essential oil bottles closely.
 - Do not let the essential oils overflow from the diffuser, as they could stain the furniture on which it is placed.
 - Maintain the essential oil diffuser only with a suitable cleaner available from your dealer.
 - Do not place the diffuser on an inclined or unstable piece of furniture. It could fall, break and cause injury.
 - Keep these devices out of the reach of children.
 - This device can be used by children 8 years of age and over and by people with reduced

physical, sensory or mental capacities or a lack of experience and knowledge, if they are supervised or have received instructions regarding use of the device in safe conditions and understand the risks associated with its use.

- Children must not play with the device.
- Cleaning and maintenance should not be carried out by children without supervision.
- The device should only be used with the recommended diffusion substances. The use of other substances may create a toxic hazard or fire hazard.
- The device can only be used with the power adapter supplied.
- Unplug the device before any handling or maintenance work and make sure it is free of any liquid or substance to diffuse.
- The device must be powered only by the very low safety voltage corresponding to the marking on the device.

- These instructions for use and spare parts are available on the website **www.innobiz.fr**.
- If the power cable is damaged, it must be replaced with a special cable or assembly available from the manufacturer or its after-sales service.
- The power cable cannot be replaced. If the cable is damaged, the device should be scrapped.



- The crossed-out bin sign affixed to the product or its accessories means that they belong to the family of electrical and electronic equipment. As such, European regulations require that you arrange its selective collection:

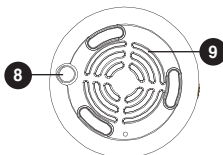
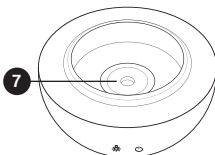
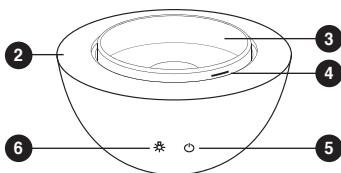
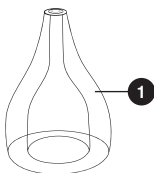
- at distribution points if purchasing an equivalent product,
- at the collection points provided locally (recycling centre, selective collection etc). In this way, you will be helping with the reuse and recovery of Waste Electrical and Electronic Equipment which can have potentially harmful effects on the environment and human health.




- This device meets the requirements of the European community in terms of safety, hygiene, the environment and respect for consumer protection.


This essential oil diffuser uses ultrasonic diffusion technology.

1. Double glass bell
2. Device base
3. Water reservoir
4. Maximum water level
5. On/Off button
6. Light effects button
7. Ultrasonic mist generator
8. Power socket **A**
9. Ventilation system

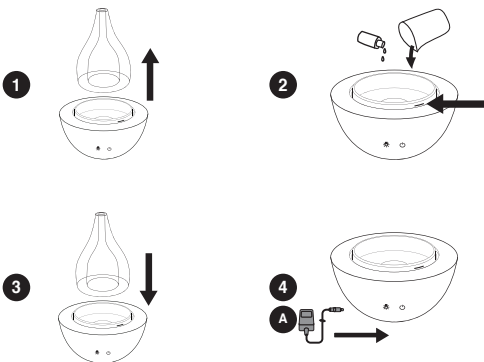


1. Remove the double glass bell from the base.
2. Pour tap water into the water reservoir without exceeding the maximum level, then 8 to 10 drops of essential oil.
3. Replace the double glass bell on the base.
4. Plug the power cord of the AC adapter into socket **A** located under the base of the diffuser.
5. Press the On/Off button  to activate the diffuser; the device diffuses a continuous mist, without light show.

A 2nd press activates intermittent mist diffusion. A 3rd press turns off the device.

6. Press button  to activate the light show. A 2nd press lets you select a shade of light using successive presses.

One final press turns off the light show function.





Warning:

- Do not exceed the maximum water level.
- The amount and intensity of mist will vary depending on the type of water, temperature and air currents in the room.
- The device switches off automatically if there is insufficient water in the reservoir.
- Only use 100% natural essential oils. The use of oils containing chemical ingredients, synthetic fragrances or impurities can damage the device.
- Never tilt the device or empty/fill the reservoir with water while it's operating.
- Do not allow water to enter the ventilation system located under the base.
- Do not fill the water reservoir directly under running water; use a container for this purpose.
- Do not exceed the maximum water level in the reservoir, which can prevent the mist from escaping.

Looking after the device

EN

We recommend you clean the device after every oil change or after two uses.

1. Unplug the device and remove the double glass bell.
2. Completely empty the water from the reservoir.
3. Use a small amount of washing-up liquid to clean it. Wipe gently with a soft, dry cloth to dry it.
4. Then, use a clean cotton bud to clean the mist lens located inside the base, wiping it gently (Fig. 1).
5. NEVER use aggressive products to clean the unit, as they could react with essential oil residues and cause the release of harmful vapours or cause the unit to malfunction.



Looking after the glass bell

EN

We recommend you clean the glass cover to remove any deposits of lime and essential oils.

1. Unplug the device and remove the double glass bell.
2. Completely empty the water from the reservoir and replace it with 50% water and 50% vinegar.
3. Start diffusion for a few minutes.
4. Stop the diffuser and gently wipe the inside of the bell and the reservoir to remove all traces of vinegar water.

5. If traces of essential oils are present at the base of the inner bell, use an alcohol and essential oil-based cleaner reference: 3700471002387.

Precautions for use

EN

Please read the precautions for use below to avoid any malfunction of the device:

- If you're not a technician, do not attempt to disassemble the diffuser to repair it. Contact the retailer if repair is needed.
- Clean regularly, following the care instructions to prevent any malfunction.
- For hygiene reasons, after use, empty the water from the reservoir and wipe it with a clean, dry cloth.
- Do not allow the mist to come into direct contact with furniture, clothing, walls, etc.
- Always unplug before maintenance.
- Do not expose to direct sunlight.
- Do not put the device on an unstable surface.
- Do not use sparkling water; use only tap water or mineral water, and not demineralised water.
- Never move the device while it's operating.
- Don't touch any part of the product with wet hands.
- Keep the device away from pets and small children.
- If the power cord is smoking or burning, unplug it immediately!
- Do not touch the metal disc placed in the centre of the reservoir.

Technical features:

Diffusion mode: ultrasonic misting

Diffusion power: up to 100 m²

Power supply: mains socket - AC 100~240V /
50~60Hz - DC24V 500mA

Dimensions: Ø 90mm x h 240 mm

Weight (diffuser + adapter): 1070 gr

Electric power: 15W

Reservoir capacity: 180 ml

Diffusion duration: 5 hours and 10 hours intermittent

Contents:

- A Véralia diffuser - Ref.: 3700471010375
- A mains adapter
- Glass bell - Spare part ref: 3700471010382
- Instructions for use

Please refer to the table below in case of abnormal operation of the product.

Problem encountered	Recommended action
Won't switch on	<ul style="list-style-type: none"> • Check the reservoir contains enough water; add more without exceeding the maximum level. • Check the power cord is securely connected. Unplug, then reconnect it carefully.
Absence of mist or abnormal mist	<ul style="list-style-type: none"> • Check the water level. If there is not enough water, add the correct amount to the reservoir. If the water level exceeds the maximum level indicated, pour the water out, clean the device and add water to half the capacity of the reservoir. Close and reconnect the device, turn it on. Once a little mist has diffused, you can turn off the device again so that you can add water to the reservoir without exceeding the maximum level. • Check that the ventilation system isn't blocked with dust or dirt that could prevent the mist from escaping. • Clean the device again following the care instructions with clean water. • Check that the double glass bell is properly positioned on the base, remove it and replace it on the base.

Problem encountered	Recommended action
Absence of mist	<ul style="list-style-type: none"> • Check the water level / Do not use demineralised water. • Change the water in the reservoir for warmer tap water.
Non-responsive function button	<ul style="list-style-type: none"> • Place a single finger on the relevant icon for 1 second.
Water leak	<ul style="list-style-type: none"> • Check that the double glass bell is securely attached to the base, remove it and replace it on the base.